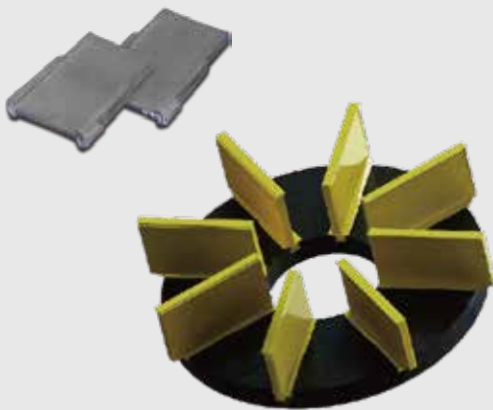


BLAST WHEEL PARTS

PanBlast™ Blast Wheel Parts are manufactured using chrome molybdenum alloy via both lost wax investment casting and conventional sand casting processes, with the former providing a superior surface finish and enhanced durability. The parts are then heat treated to achieve surface hardness of up to 65 HRC.



CAT-1801-01 Page 600 to 601

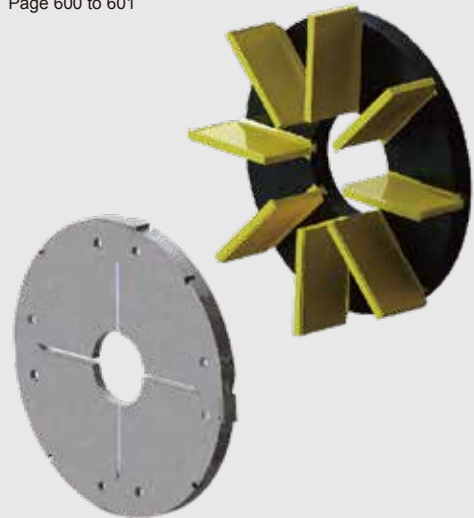


- Plug and play retrofit of parts to existing equipment
- High quality, low porosity castings with excellent surface finish
- Extended parts durability from heat-treated alloy

VANES



CAT-1801-01 Page 600 to 601



- Plug and play retrofit of parts to existing equipment
- High quality, low porosity castings with excellent surface finish
- Extended parts durability from heat-treated alloy

IMPELLERS



CAT-1801-01 Page 600 to 601



- Plug and play retrofit of parts to existing equipment
- High quality, low porosity castings with excellent surface finish
- Extended parts durability from heat-treated alloy

CONTROL CAGES



CAT-1801-01 Page 600 to 601



- Plug and play retrofit of parts to existing equipment
- High quality, low porosity castings with excellent surface finish
- Extended parts durability from heat-treated alloy

LINERS